

# Dance Monkey

Dance Monkey: Tones and I  
Arr. Stefanie Scherwey & Wim Christen

## Partitur

### Intro

♩ = 100

Musical score for the Intro section of 'Dance Monkey'. The score is in 4/4 time and G major. It features three vocal staves (1. Stimme, 2. Stimme, 3. Stimme), a Bass line, a Schlagzeug (Drum) line, and a Percussion line (Bongo, Conga, Cajon). The Intro consists of four measures. The first measure has a tempo marking of ♩ = 100. The chords are Em, C, D, and Bm. The vocal lines consist of eighth-note patterns. The Bass, Schlagzeug, and Percussion lines are mostly rests, with the Percussion line having a simple rhythmic pattern of eighth notes.

### Strophe 1&2

Musical score for the Strophe 1&2 section of 'Dance Monkey'. The score is in 4/4 time and G major. It features three vocal staves (1., 2., 3.), a Bass line, a Schlz. (Drum) line, and a Perc. (Percussion) line. The section starts at measure 5 and consists of four measures. The chords are Em, C, D, and Bm. The vocal lines consist of eighth-note patterns. The Bass line has a simple rhythmic pattern of eighth notes. The Schlz. and Perc. lines have a simple rhythmic pattern of eighth notes.



17      Em                                  C                                  D                                  Bm

1.

2.

3.

Bass

Schlgz.

Perc.

**Refrain**

21      Em                                  C                                  D                                  Bm

1.

2.

3.

Bass

Schlgz.

Perc.

25      Em                      C                      D                      Bm

1.

2.

3.

Bass

Schlz.

Perc.

**Refrain 2**

29      Em                      C                      D                      Bm

1.

2.

3.

Bass

Schlz.

Perc.



**weiter mit Refrain  
und Refrain 2**

41

Em C D Bm

1.

2.

3.

Bass

Schlgz.

Perc.



# 2 Dance Monkey

Dance Monkey: Tones and I  
Arr. Stefanie Scherwey & Wim Christen

## Partitur

### Intro

♩ = 100

Musical notation for the Intro section, measures 1-4. The key signature is one sharp (F#) and the time signature is 4/4. The notes are quarter notes, and the chords are Em, C, D, and Bm.

### Strophe 1&2

Musical notation for Strophe 1&2, measures 5-8. The key signature is one sharp (F#) and the time signature is 4/4. The notes are quarter notes, and the chords are Em, C, D, and Bm.

Musical notation for Strophe 1&2, measures 9-12. The key signature is one sharp (F#) and the time signature is 4/4. The notes are quarter notes, and the chords are Em, C, D, and Bm.

### Pre-Chorus

Musical notation for Pre-Chorus, measures 13-16. The key signature is one sharp (F#) and the time signature is 4/4. The notes are quarter notes with rests, and the chords are Em, C, D, and Bm.

Musical notation for Pre-Chorus, measures 17-20. The key signature is one sharp (F#) and the time signature is 4/4. The notes are quarter notes with rests, and the chords are Em, C, D, and Bm.

### Refrain

Musical notation for Refrain, measures 21-24. The key signature is one sharp (F#) and the time signature is 4/4. The notes are eighth notes, and the chords are Em, C, D, and Bm.

Musical notation for Refrain, measures 25-28. The key signature is one sharp (F#) and the time signature is 4/4. The notes are eighth notes, and the chords are Em, C, D, and Bm.

### Refrain 2

Musical notation for Refrain 2, measures 29-32. The key signature is one sharp (F#) and the time signature is 4/4. The notes are eighth notes, and the chords are Em, C, D, and Bm.

Musical notation for Refrain 2, measures 33-36. The key signature is one sharp (F#) and the time signature is 4/4. The notes are eighth notes, and the chords are Em, C, D, and Bm.

### Bridge

Musical notation for Bridge, measures 37-40. The key signature is one sharp (F#) and the time signature is 4/4. The notes are whole notes, and the chords are Em, C, D, Bm, Em, C, D, and Bm.

weiter mit Refrain  
und Refrain 2



# 3 Dance Monkey

Dance Monkey: Tones and I  
Arr. Stefanie Scherwey & Wim Christen

## Partitur

### Intro

♩ = 100

Musical notation for the Intro section, measures 1-4. The key signature is one sharp (F#) and the time signature is 4/4. The melody consists of eighth notes. Chords are Em, C, D, and Bm.

### Strophe 1&2

Musical notation for Strophe 1&2, measures 5-8. The melody consists of eighth notes. Chords are Em, C, D, and Bm.

Musical notation for Strophe 1&2, measures 9-12. The melody consists of eighth notes. Chords are Em, C, D, and Bm.

### Pre-Chorus

Musical notation for Pre-Chorus, measures 13-16. The melody consists of quarter notes with eighth rests. Chords are Em, C, D, and Bm.

Musical notation for Pre-Chorus, measures 17-20. The melody consists of quarter notes with eighth rests. Chords are Em, C, D, and Bm.

### Refrain

Musical notation for Refrain, measures 21-24. The melody consists of eighth notes with eighth rests. Chords are Em, C, D, and Bm.

Musical notation for Refrain, measures 25-28. The melody consists of eighth notes with eighth rests. Chords are Em, C, D, and Bm.

### Refrain 2

Musical notation for Refrain 2, measures 29-32. The melody consists of eighth notes with eighth rests. Chords are Em, C, D, and Bm.

Musical notation for Refrain 2, measures 33-36. The melody consists of eighth notes with eighth rests. Chords are Em, C, D, and Bm.

### Bridge

Musical notation for Bridge, measures 37-40. The melody consists of quarter notes. Chords are Em, C, D, Bm, Em, C, D, and Bm.

weiter mit Refrain  
und Refrain 2

# Bass

# Dance Monkey

Dance Monkey: Tones and I  
Arr. Stefanie Scherwey & Wim Christen

## Partitur

### Intro

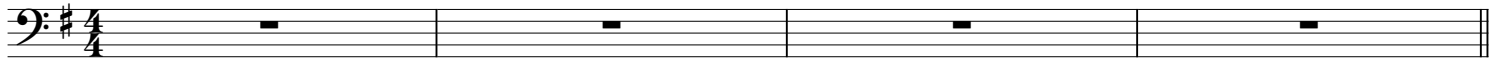
♩ = 100

Em

C

D

Bm



### Strophe 1&2

5

Em

C

D

Bm

Em

C

D

Bm



### Pre-Chorus

13

Em

C

D

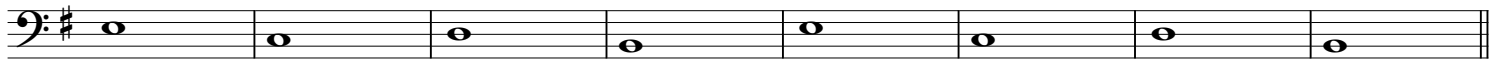
Bm

Em

C

D

Bm



### Refrain

21

Em

C

D

Bm

Em

C

D

Bm



### Refrain 2

29

Em

C

D

Bm

Em

C

D

Bm



### Bridge

37

Em

C

D

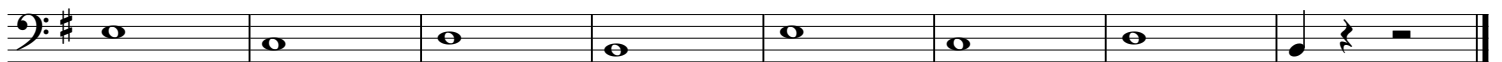
Bm

Em

C

D

Bm



weiter mit Refrain  
und Refrain 2

# Congas

# Dance Monkey

Dance Monkey: Tones and I  
Arr. Stefanie Scherwey & Wim Christen

## Partitur

### Intro

♩ = 100

Musical notation for the Intro section, measures 1-4. The key signature is one flat (B-flat major/E minor), and the time signature is 4/4. The notes are quarter notes on the lines G4, Bb4, D5, and G5. Chords are Em, C, D, and Bm.

### Strophe 1&2

Musical notation for Strophe 1&2, measures 5-8. The notes are quarter notes on the lines G4, Bb4, D5, and G5. Chords are Em, C, D, and Bm.

Musical notation for Strophe 1&2, measures 9-12. The notes are quarter notes on the lines G4, Bb4, D5, and G5. Chords are Em, C, D, and Bm.

### Pre-Chorus

Musical notation for Pre-Chorus, measures 13-16. The notes are eighth notes on the lines G4, Bb4, D5, and G5. Chords are Em, C, D, and Bm.

Musical notation for Pre-Chorus, measures 17-20. The notes are eighth notes on the lines G4, Bb4, D5, and G5. Chords are Em, C, D, and Bm.

### Refrain

Musical notation for Refrain, measures 21-24. The notes are eighth notes on the lines G4, Bb4, D5, and G5. Chords are Em, C, D, and Bm.

Musical notation for Refrain, measures 25-28. The notes are eighth notes on the lines G4, Bb4, D5, and G5. Chords are Em, C, D, and Bm.

### Refrain 2

Musical notation for Refrain 2, measures 29-32. The notes are eighth notes on the lines G4, Bb4, D5, and G5. Chords are Em, C, D, and Bm.

Musical notation for Refrain 2, measures 33-36. The notes are eighth notes on the lines G4, Bb4, D5, and G5. Chords are Em, C, D, and Bm.

### Bridge

Musical notation for Bridge, measures 37-40. The notes are quarter notes on the lines G4, Bb4, D5, and G5. Chords are Em, C, D, and Bm.

A musical staff with a treble clef and a key signature of one flat (B-flat). The staff contains a sequence of notes and rests, grouped into measures by vertical bar lines. Above the staff, the chords Em, C, D, and Bm are indicated. The notes are: Em (E4, G4, Bb4), C (E4, G4, Bb4), D (F4, A4, Bb4), and Bm (Bb4, D5, F5). The notes are connected by stems and have flags. There are rests in the second and fourth measures. The staff ends with a double bar line.

**weiter mit Refrain  
und Refrain 2**

# Schlagzeug

# Dance Monkey

Dance Monkey: Tones and I  
Arr. Stefanie Scherwey & Wim Christen

## Partitur

### Intro

♩ = 100

Em C D Bm

Musical notation for the Intro section, measures 1-4. The drum set part consists of four measures of rests, corresponding to the chords Em, C, D, and Bm.

### Strophe 1&2

5 Em C D Bm Em C D Bm

Musical notation for the first and second lines of the verse, measures 5-8. The drum set part features a consistent pattern of eighth notes and rests, with accents on the final two notes of each measure.

### Pre-Chorus

13 Em C D Bm

Musical notation for the Pre-Chorus section, measures 13-16. The drum set part features a consistent pattern of eighth notes and rests, with accents on the final two notes of each measure.

17 Em C D Bm

Musical notation for the Pre-Chorus section, measures 17-20. The drum set part features a consistent pattern of eighth notes and rests, with accents on the final two notes of each measure.

### Refrain

21 Em C D Bm

Musical notation for the first line of the Refrain, measures 21-24. The drum set part features a consistent pattern of eighth notes and rests, with accents on the final two notes of each measure.

25 Em C D Bm

Musical notation for the second line of the Refrain, measures 25-28. The drum set part features a consistent pattern of eighth notes and rests, with accents on the final two notes of each measure.

### Refrain 2

29 Em C D Bm

Musical notation for the first line of Refrain 2, measures 29-32. The drum set part features a consistent pattern of eighth notes and rests, with accents on the final two notes of each measure.

33 Em C D Bm

Musical notation for the second line of Refrain 2, measures 33-36. The drum set part features a consistent pattern of eighth notes and rests, with accents on the final two notes of each measure.

### Bridge

37 Em C D Bm

Musical notation for the first line of the Bridge, measures 37-40. The drum set part features a consistent pattern of eighth notes and rests, with accents on the final two notes of each measure.

41 Em C D Bm

Musical notation for the second line of the Bridge, measures 41-44. The drum set part features a consistent pattern of eighth notes and rests, with accents on the final two notes of each measure.

weiter mit Refrain  
und Refrain 2